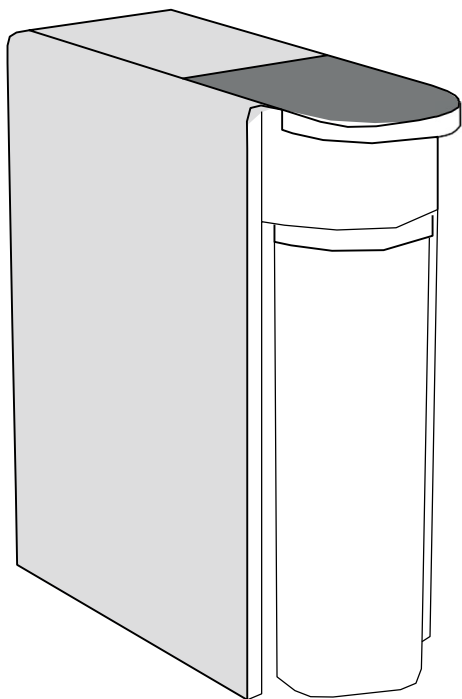


ecosoft



CROSS SOLO

DIRECT FLOW REVERSE OSMOSIS FILTER

EN
UA
PL
ES

INSTALLATION AND FIRST START-UP GUIDE
ІНСТРУКЦІЯ З МОНТАЖУ ТА ПЕРШОГО ЗАПУСКУ
INSTRUKCJA INSTALACJI I PIERWSZEGO URUCHOMIENIA
INSTALACIÓN Y PRIMER PUESTA EN MARCHA

CONTENT

INSTALLATION AND FIRST START-UP

WARNINGS.....	3
SUPPLY WATER QUALITY RE- QUIREMENTS	4
UNPACKING AND INSPECTION	5
PREPARATION FOR INSTALLATION	6
INSTALL FEED WATER CONNECTION	7
INSTALLATION OF THE LEAK SENSOR	10
DRAIN CONNECTION	11
DRINKING FAUCET CONNECTION	13
FIRST FILTER START-UP.....	15

CARTRIDGE REPLACEMENT GUIDE

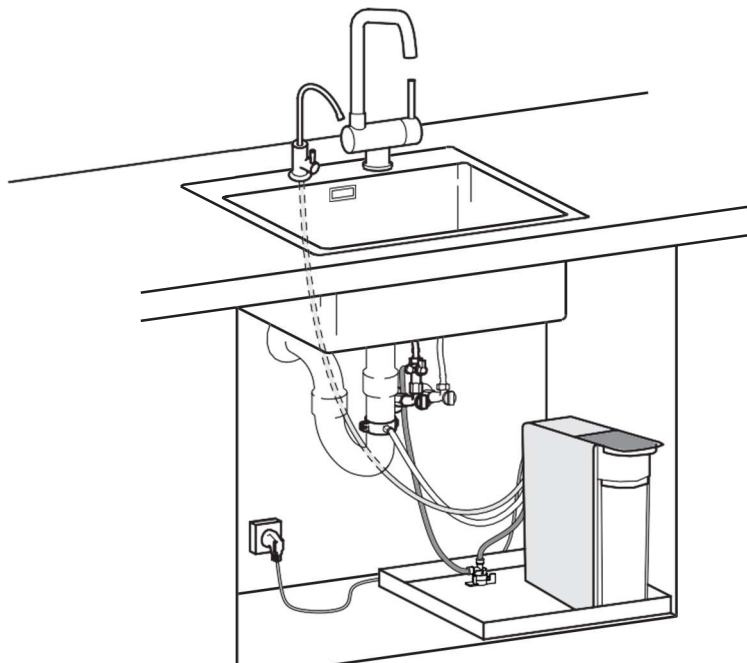
REMOVING THE USED CARTRIDGE.....	18
INSTALLING THE NEW CARTRIDGE.....	19
FILTER STARTUP	19

INSTALLATION AND FIRST START-UP

1

WARNINGS

- 1 **Input Water:** Connect only to a cold water supply that is free of chlorine and sediment impurities. Refer to the CROSS Solo filter manual for detailed water requirements.
- 2 **Installation:** Ensure all connections are securely tightened.
- 3 **Pressure Regulator:** A pressure regulator must be installed before the system. Recommended pressure: 1–4 bar.
- 4 **Electrical Safety:** Connect the adapter only to a grounded outlet. Do not use the filter with a damaged power cable.
- 5 **Monitoring:** Monitor the system for leaks during the first 8 hours after installation.
- 6 **Maintenance:** Replace cartridges every 12 months. Replacement frequency may vary depending on water quality and usage intensity.
- 7 **Usage:** The filter is designed exclusively for purifying drinking water.
- 8 **Warranty:** Failure to comply with these guidelines may void the warranty.



2 **SUPPLY WATER QUALITY REQUIREMENTS**

Index	Value**	Index	Value**
pH	6.5–8.5	Manganese	max 0.1 mg/L
TDS	max 1000 mg/L	Chemical oxygen demand	max 5 mg O ₂ /L
Hardness	300 mg CaCO ₃ /L (max 20°dH)	Total bacterial count (TBC)	max 50 CFU/mL
Free chlorine	max 0.01 mg/L***	E. coli titer	max 3
Iron	max 0.3 mg/L	Turbidity	max 3.5 NTU

Do not use this filter with microbiologically unsafe water or water of unknown quality unless it has been adequately disinfected before or after filtration.

* If water supply does not meet the requirements, service life of membrane and/or pre-filter cartridges may be shortened.

** If your home is supplied with raw wellwater, perform laboratory test of your water before installing a reverse osmosis filter. If any of your water indices exceed the limit, consider using a water treatment system to correct supply water quality. Refer to water treatment specialists or companies for advice and proper equipment selection.

*** If the water quality requirements for free chlorine and turbidity exceed the requirements for the water supplied to the RO filter, it is recommended to install Ecosoft in-line filter FDPP3P0110/G118 with dual gradient PP sediment filter and activated carbon cartridge.



FDPP3P0110/G118

3

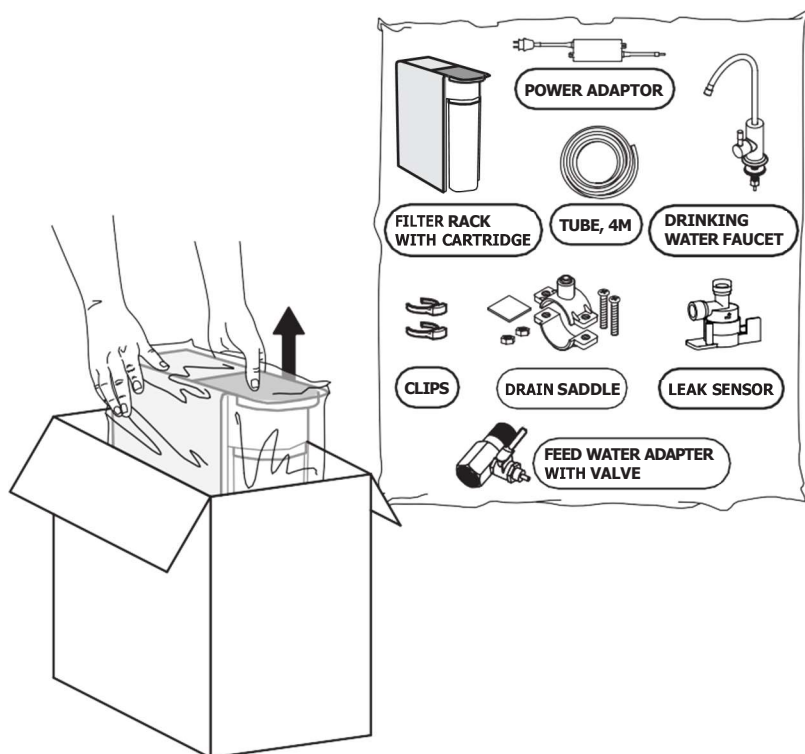
UNPACKING AND INSPECTION

- 1 Carefully unpack the system.
- 2 Inspect the contents for damage. Do not open the sealed component package.



Important: The manufacturer does not accept claims if the package is opened.

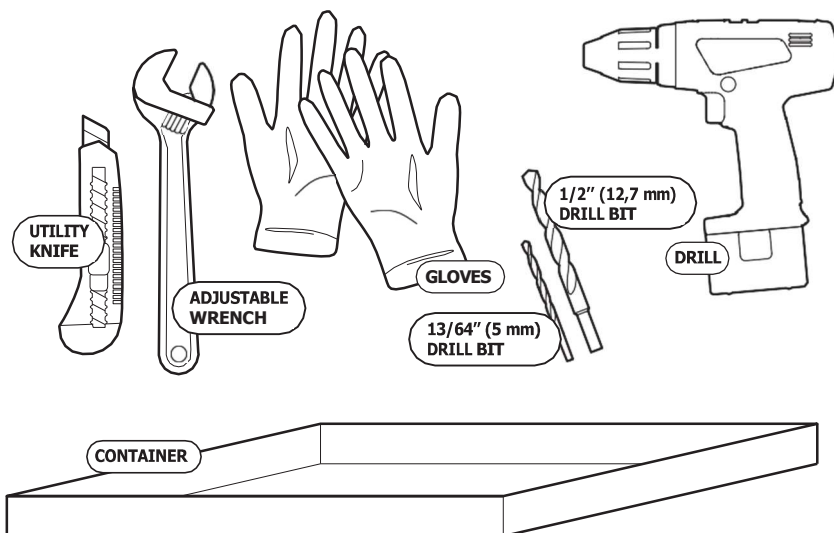
- 3 In case of missing parts or damage, contact the seller immediately.
- 4 If the product was damaged during transportation, contact the delivery company immediately.



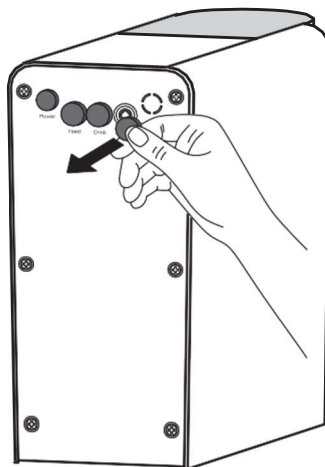
4

PREPARATION FOR INSTALLATION

- 1 Ensure you have all necessary tools and equipment, and the installation space is prepared.



- 2 Carefully remove all protective plugs from the back panel of the filter.



5

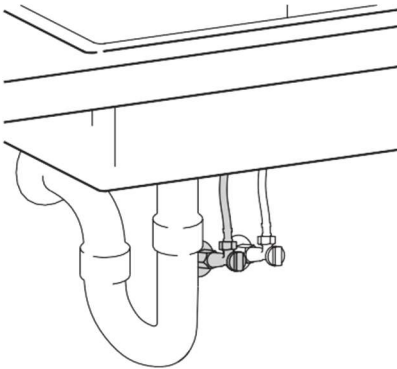


INSTALL FEED WATER CONNECTION

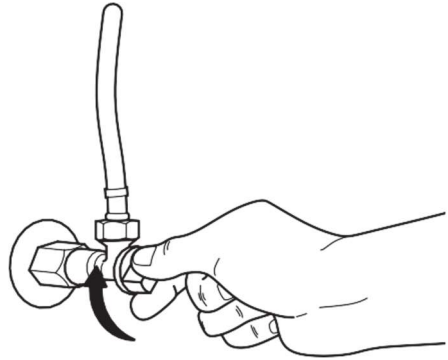
Ensure the filter is connected only to cold tap water.

- 1 Shut off the cold water valve at the entrance to the apartment and open the sink faucet to release pressure from the system. Then, close the faucet.

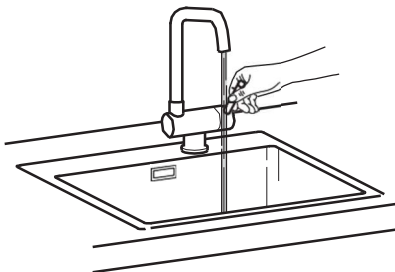
1



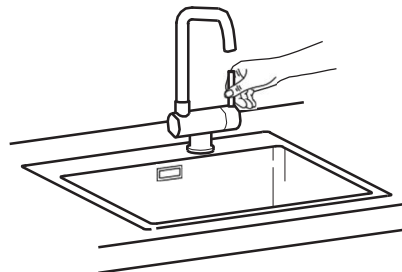
2



3

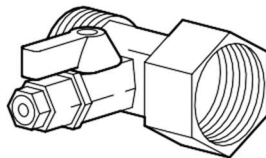


4

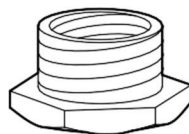
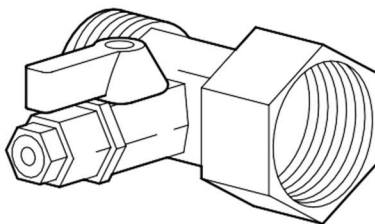
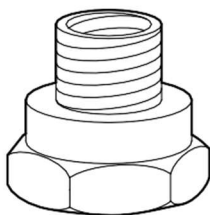




To connect to a 1/2" cold water feed line, it is sufficient to install a tee in the feed line.

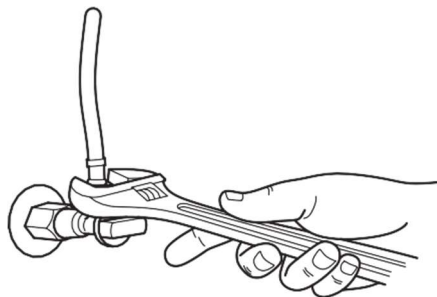


If you have a 3/8" connection, use the additional adapters included in the kit.

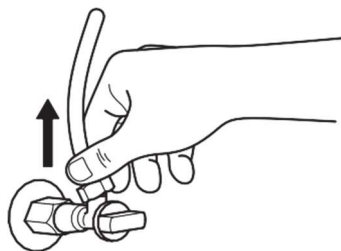


- 2 Install the feed water adapter in the cold water pipe.

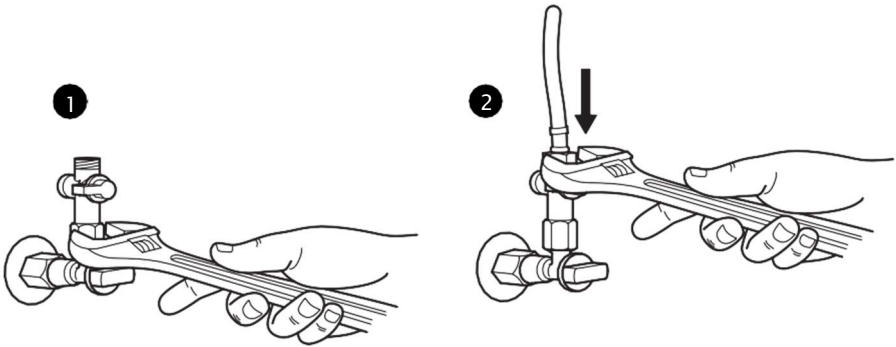
1



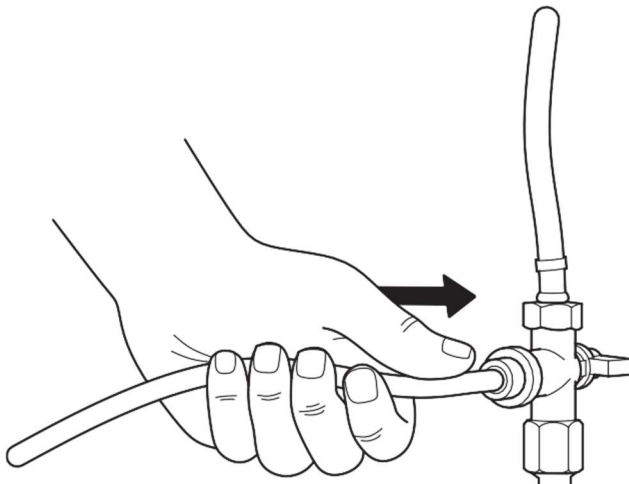
2



- 3 Tighten the nut by hand, then use a wrench for added security.



- 4 Cut the required length of the tubing, connect it to the feed water adapter and use fixing clip.

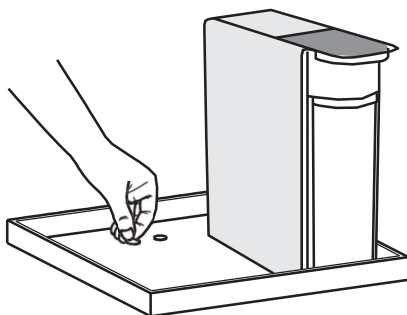


6

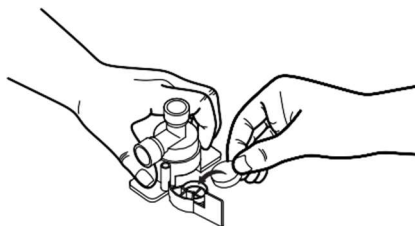
INSTALLATION OF THE LEAK SENSOR

- 1 Attach the adhesive stickers to the surface.
- 2 Install the leak detector element in the space marked.
- 3 Place the leak detector on the stickers.
- 4 Connect the tube from the feed water adapter to the sensor.
- 5 Cut the tube and connect it to the sensor.
- 6 Connect the tube to the «Feed» panel and secure the tube with the clips for reliable fixation.

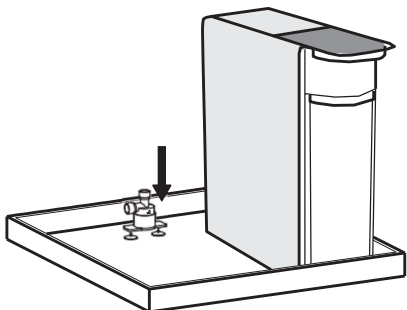
1



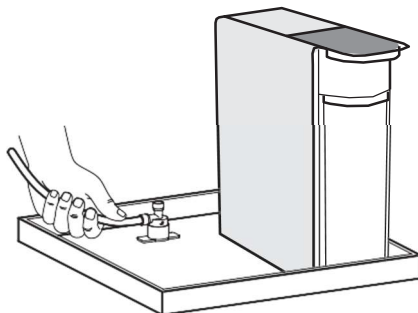
2



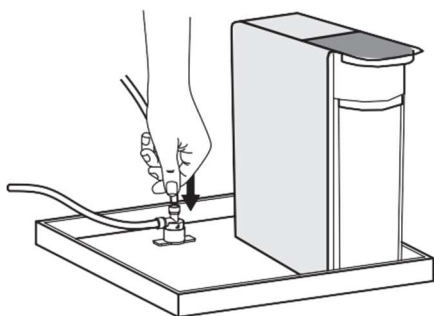
3



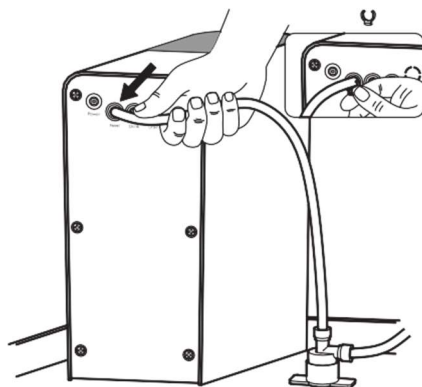
4



5



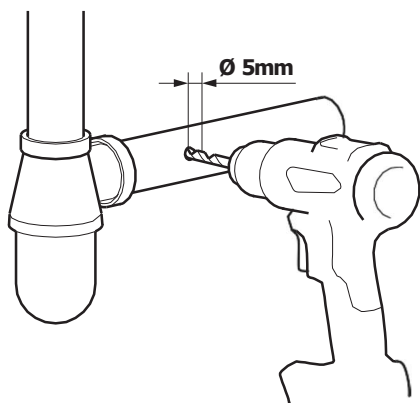
6



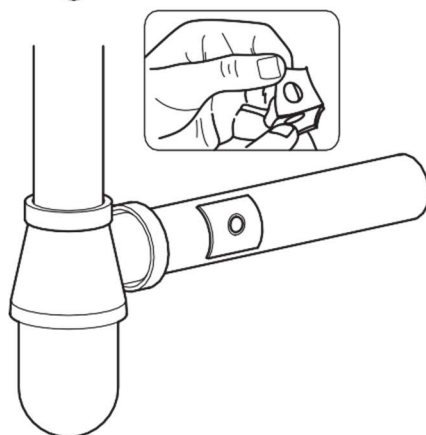
7 DRAIN CONNECTION

- 1 Drill a 5 mm hole in the drainpipe.
- 2 Install the sealing gasket with its adhesive side facing the pipe.
- 3 Attach the drain clamp, ensuring the hole in the pipe aligns with the clamp's fitting.
- 4 Tighten the clamp screws.
- 5 Insert the tube into the drain fitting.
- 6 Connect the tubing to the «Drain» port on the filter and secure it with a fixing clip.

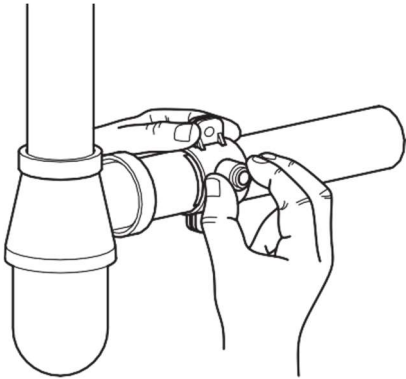
1



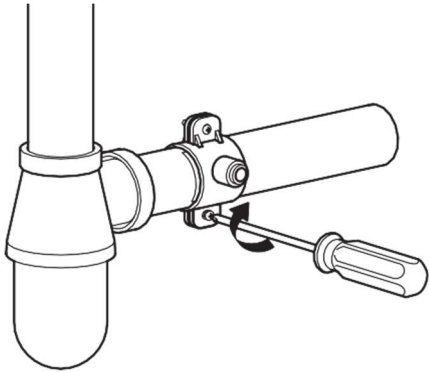
2



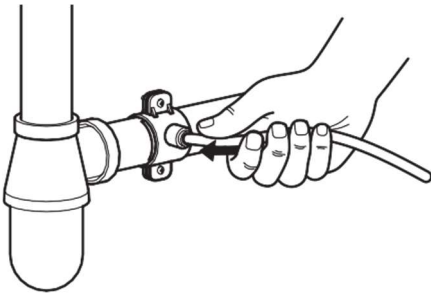
3



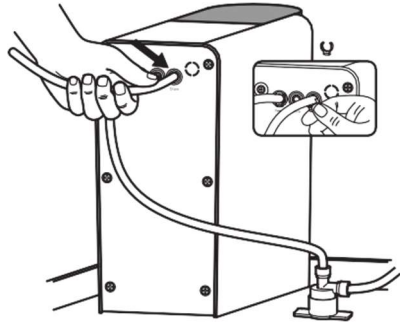
4



5



6



8

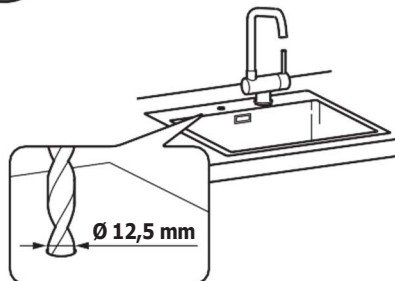
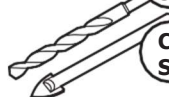
DRINKING FAUCET CONNECTION

- 1 Drill a 12.5 mm hole in the countertop or sink.
- 2 Assemble the faucet on the countertop or sink.

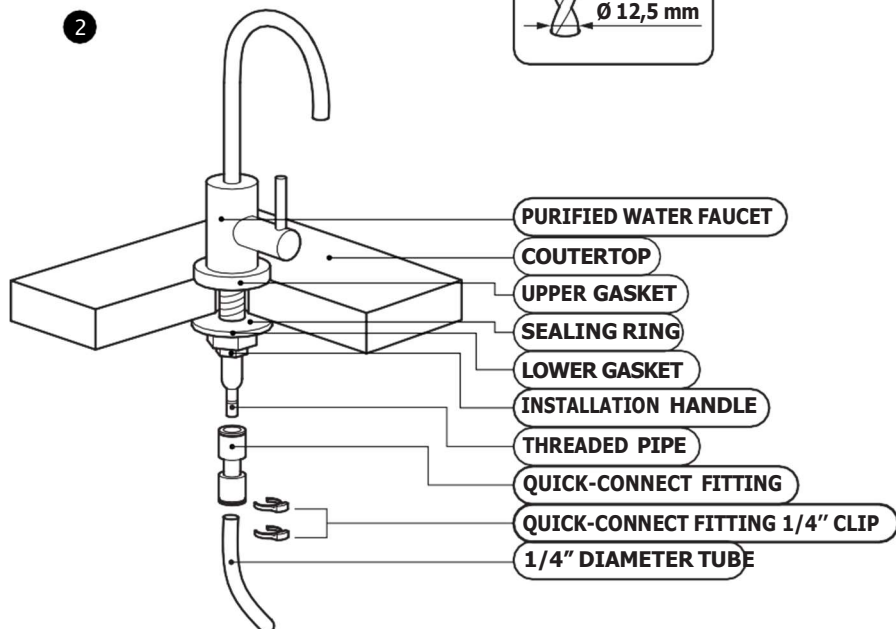
1

METAL AND WOODEN SURFACES

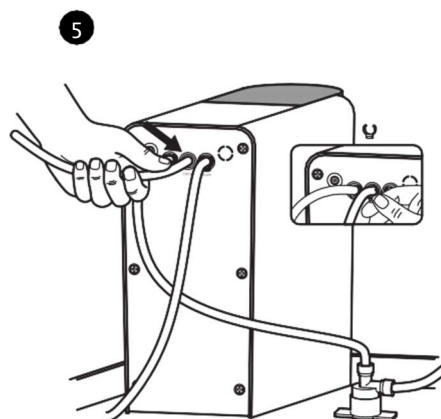
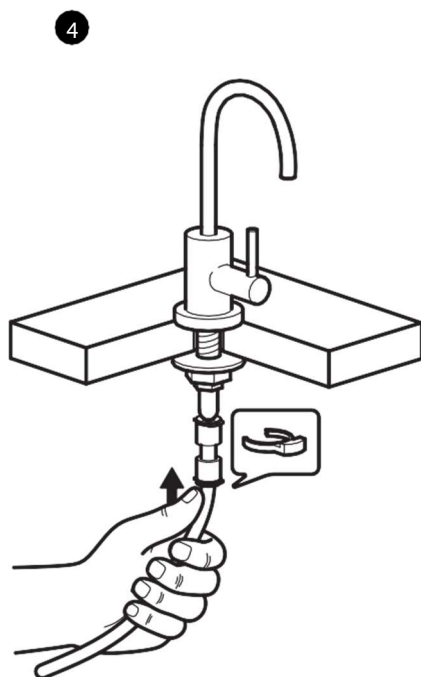
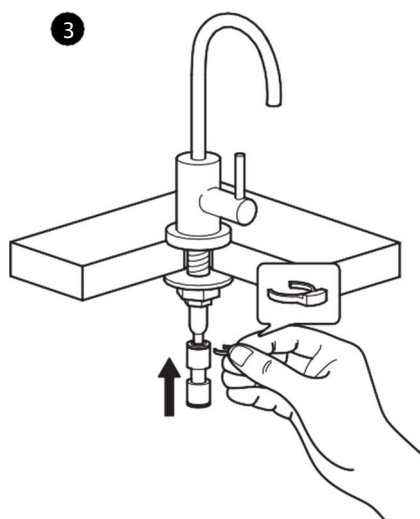
CERAMIC AND STONE SURFACES



2



- 3 Insert the quick-connect fitting into the faucet pipe and secure it with a clip.
- 4 Cut the required length of tubing and insert it into the quick-connect fitting, securing it with a clip.
- 5 Connect the tubing to the «Drink» port on the connection panel and secure it with a fixing clip.

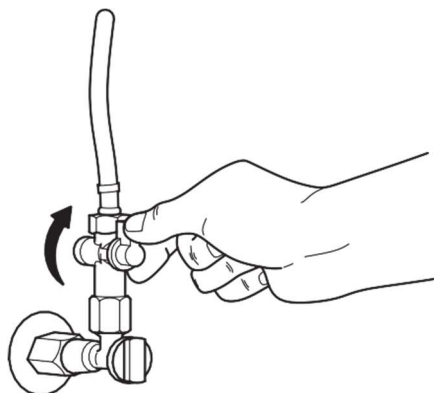


9

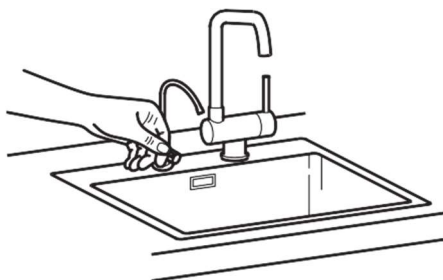
FIRST FILTER START-UP

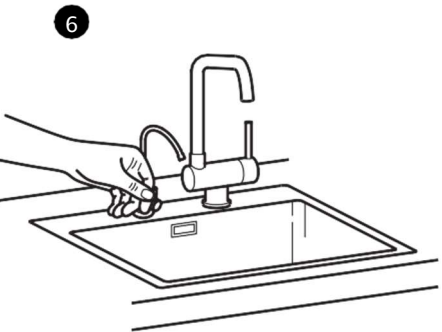
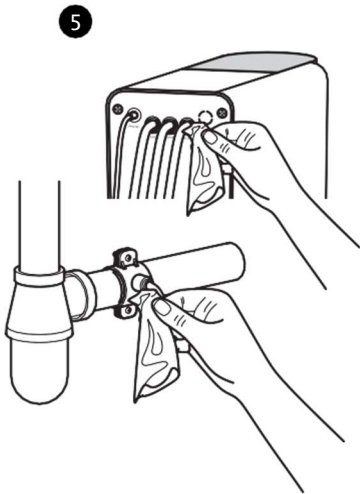
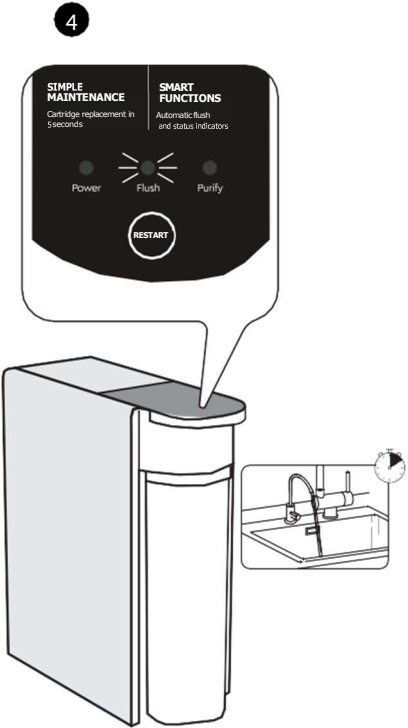
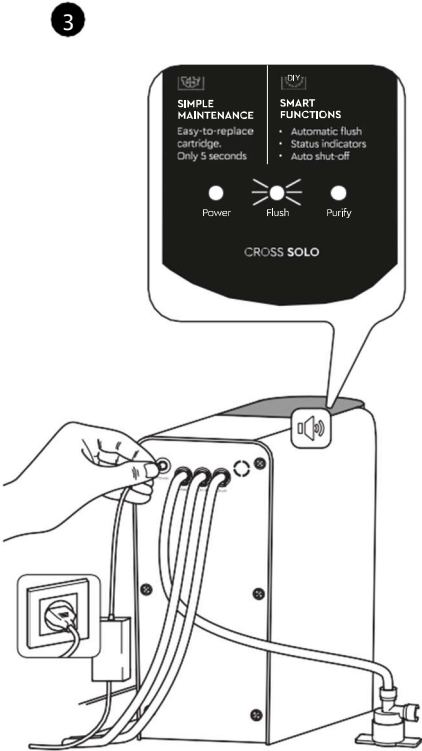
- 1 Open the cold water supply valve.
- 2 Open the purified water facet.
- 3 Connect the power adapter to the power outlet on the connection panel. A short beep will sound, and three indicators will light up in blue. The filter will automatically flush for 18 seconds.
- 4 Flush the filter for an additional 10 minutes by opening the purified water facet. Indicators 1 and 3 will stay on, while indicator 2 will blink. After 10 minutes, close the purified water facet.
- 5 Check all connections for leaks by wiping them with a paper towel. Ensure that all tubing is securely connected.
- 6 Close the purified water facet and make sure the faucet is not leaking. The filter installation is complete.

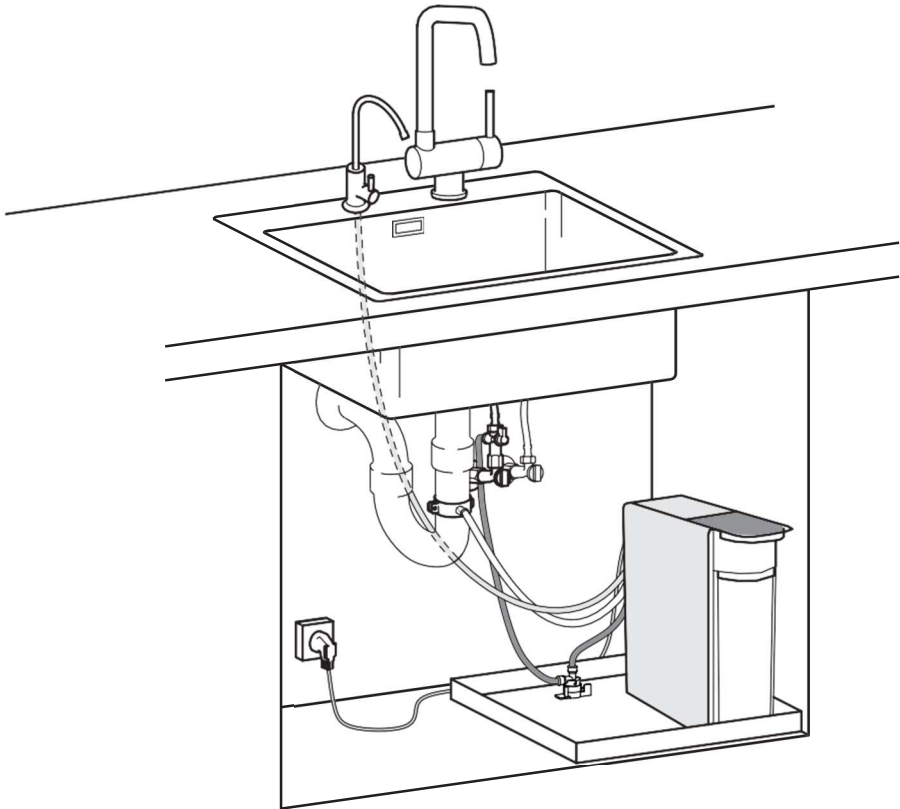
1



2







CARTRIDGE REPLACEMENT GUIDE



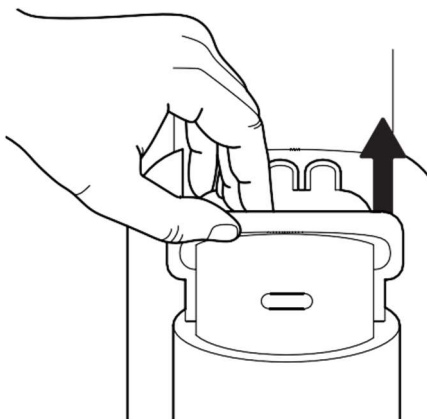
Before starting:

1. Close the cold water valve at the system inlet.
2. Unplug the filter by disconnecting the power adapter.

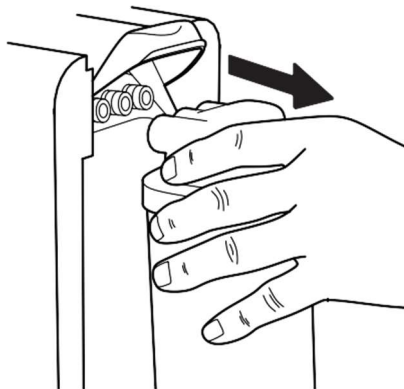
1

REMOVING THE USED CARTRIDGE

- 1 Open the safety lock.

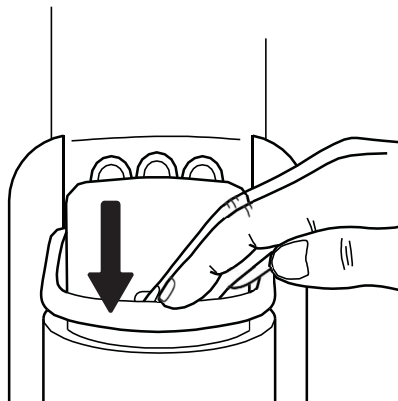
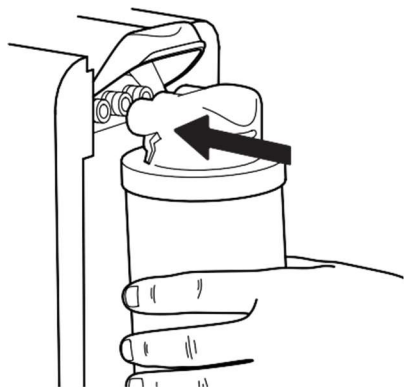


- 2 Remove the used cartridge and dispose of it properly.



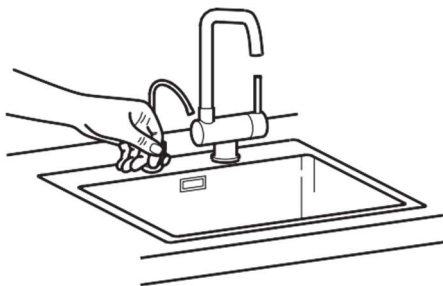
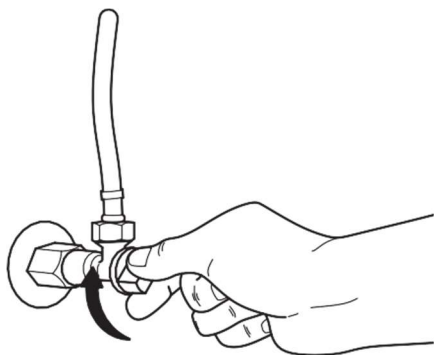
2 **INSTALLING THE NEW CARTRIDGE**

- 1 Unpack the new cartridge.
- 2 Remove the protective caps (if present).
- 3 Insert the cartridge fully into the slot.
- 4 Secure the cartridge and close the safety lock.

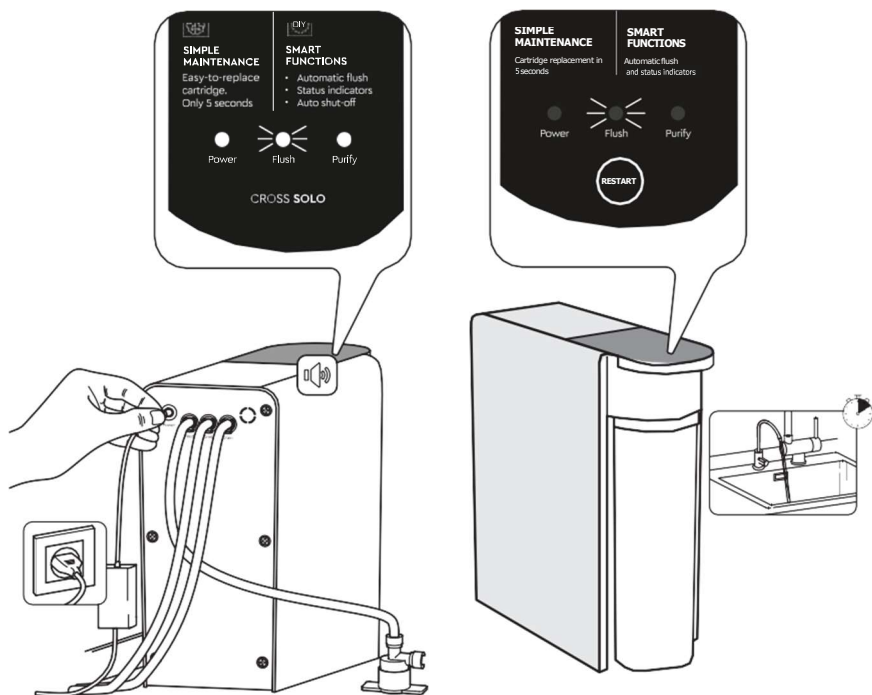


3 **FILTER STARTUP**

- 1 Open the cold water supply valve.
- 2 Open the purified water facet.

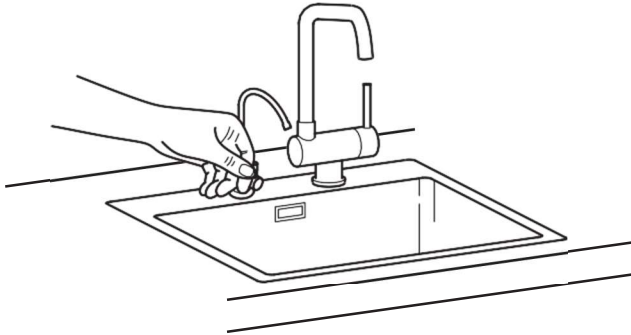


- 3 Connect the power adapter to the power outlet on the connection panel. A short beep will sound, and three indicators will light up in blue. The filter will automatically flush for 18 seconds.
- 4 Rinse the filter for a further 10 minutes by opening the purified water faucet. Indicators 1 and 2 will remain on and indicator 3 will flash. After 10 minutes, close the purified water faucet

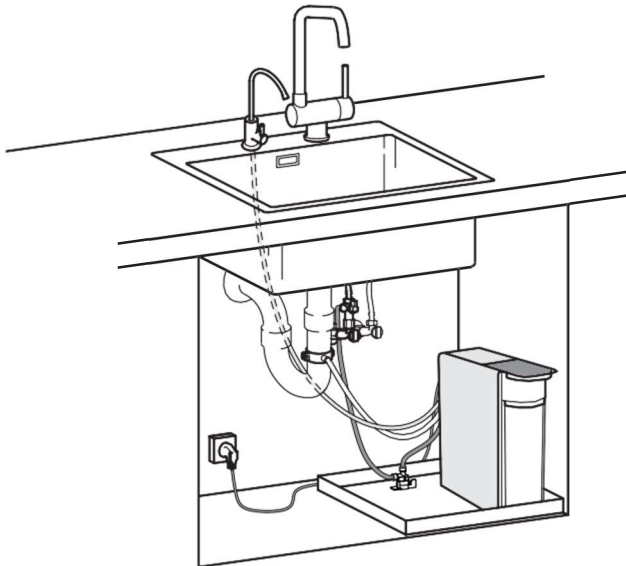


- 5 Check all connections for leaks by wiping them with a paper towel. Ensure that all tubing is securely connected.

- 6 Close the purified water faucet.



- 7 Cartridge replacement is complete. Your filter is now ready for use!



Attention: We recommend pouring the first two morning glasses down the drain or using them to water your flowers, as purified water after overnight non-operating may have slightly higher levels of dissolved substances due to natural membrane diffusion.